

SIFONE

HL®

ABLÄUFE

INFO
03/2015

HL540(I) shower trap „Primus Drain“



HL540

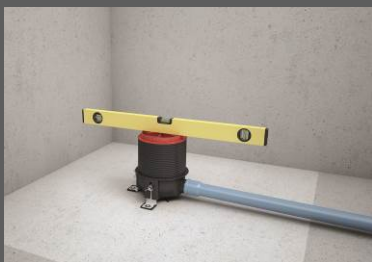


HL540i

Since now 60 years the Austrian family company HL Hutterer & Lechner produces siphons, drains and traps. Latest result of this long-time experience: The shower trap HL540 „Primus Drain“. This is more or less an improved floor drain, especially designed for tiled and barrier-free showers. Main objective was set on simple installation for the plumber and an easy way of cleaning for the user of the shower. For exclusive bathrooms a special design version has been created: HL540i.

simple • compact • clever

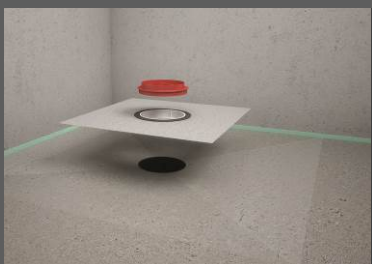
Installation



The advantages of this new shower trap can be seen already, when installing it: Stable attachment on the screed by sound-disconnected stainless steel angles. The drain body is able to be adjusted in height by these angles, to produce an incline of the waste pipe.



Next step is very easy: Because now already the screed may be filled in, no matter which height. It's no longer necessary to set the drain exactly on the upper level of the screed. Later changes of the height of the floor construction do not matter to the plumber: – the salient tube is cut with a saw blade or with a cutting disc, after the screed is dry.



After that the sealing membrane is inserted into the drain body and may be connected to the hydro-insulation.



The frame is inserted, suitable for tiles from 8mm to 30mm, including tile glue. After finishing the floor the trap is inserted. The "Primus" trap itself is a so called „dry siphon“: it prevents the upraising of sewage gas, also when the water in the siphon has evaporated. Of course the trap is removable, on the one hand for an easy cleaning, on the other hand it gives you a generous access to the waste pipe, if a congestion should occur. Just to make sure!



For elegant and upper class bathrooms and to reach a uniform design: HL540i –same technique, but grate made of brushed, massive stainless steel with integrated hollow for inserting the suitable tile.

Main technical data HL540(i) „PRIMUS DRAIN“

Capacity	0.8l/s (HL540I: 0,6l/s)
Installation height	min. 80mm, max. 250mm to upper level of screed
Frame	Stainless steel V4A, 145 x 145mm
Grate	Stainless steel V2A, 138 x 138mm
Height of water trap	50mm (HL540I: 40mm)

HL540

SPARE PARTS

HL540I



HL03900.0E

ABS supporting frame 145 x 145mm



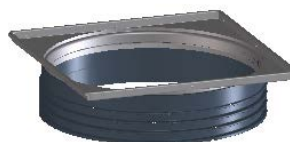
HL03910.1E

V2A inox grate 138 x 138mm



HL0540I

V4A inox grate 138 x 138mm, tile
hollow 74 x 74mm, depth 13mm



HL0540.2E

V4A inox frame
145 x 145mm, height 8 – 30 mm

HL540



HL2040
PP/ABS PRIMUS-trap,
50mm water sealing

SPARE PARTS



HL0540.4E
PC/ABS/TPE – fleece covered sealing kit
with rubber gasket



HL540K
Drain body DN50 PP/ABS/Inox

HL540I



HL2040I
PP/ABS PRIMUS-trap,
40mm water sealing

PACKAGE

1 piece in carton box 240mm x 240mm x 292mm

91 pcs./pallet 1200mm x 800mm x 1850mm

WEIGHT

HL540: net 1500g; gross: 1800g

HL540I: net 1800g; gross: 2100g

PRICES

See price list

DELIVERY FROM:

15th of June 2015